

Guidance signs for aerodromes

Objective

Sign Partner A/S wished to enter the market for signs that shall comply with international standards, like taxiing sign in aerodromes.

These signs have to be measured for luminance, colours and uniformity according to ICAO standards for aerodromes.



Figure 1. Examples of guidance signs.

Work done

The luminance's, colours and uniformity of luminances of both the background and the characters had to be measured in a fine grid to calculate the uniformities. In stead of performing app. 200 luminance measurements and a few colour measurements, 4 ICAM shot accomplished the task. From the images the relevant luminance's and colours were easily compiled. The right measuring points were always available as literally 'all' points were measured.

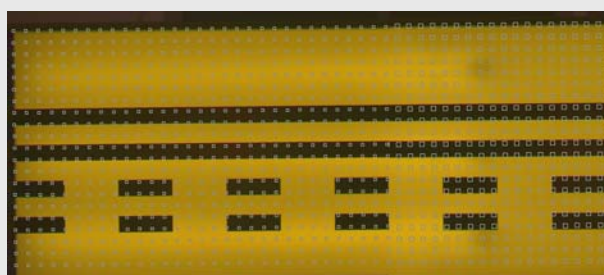
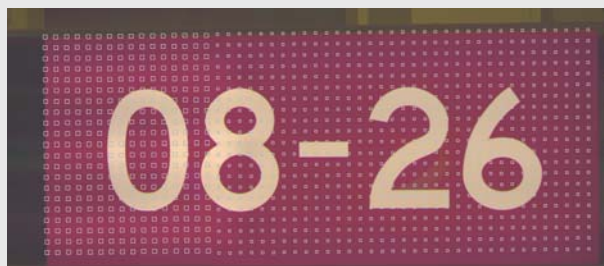


Figure 2. ICAM images with very fine calculation grid shown.

Results and further development

The ICAM measurements reveal that a change of one of the initial colours had to be done. Further assistance in optimal placement of the fluorescent tubes inside the sign was given.

Signs from Sign Partner match the ICAO requirements and are used in several aerodromes.

Partner

SIGN PARTNER A/S
 Esbjerg, Denmark
 Sales and marketing: Torben Kristensen
 E-mail: info@signpartner.dk
www.signpartner.dk